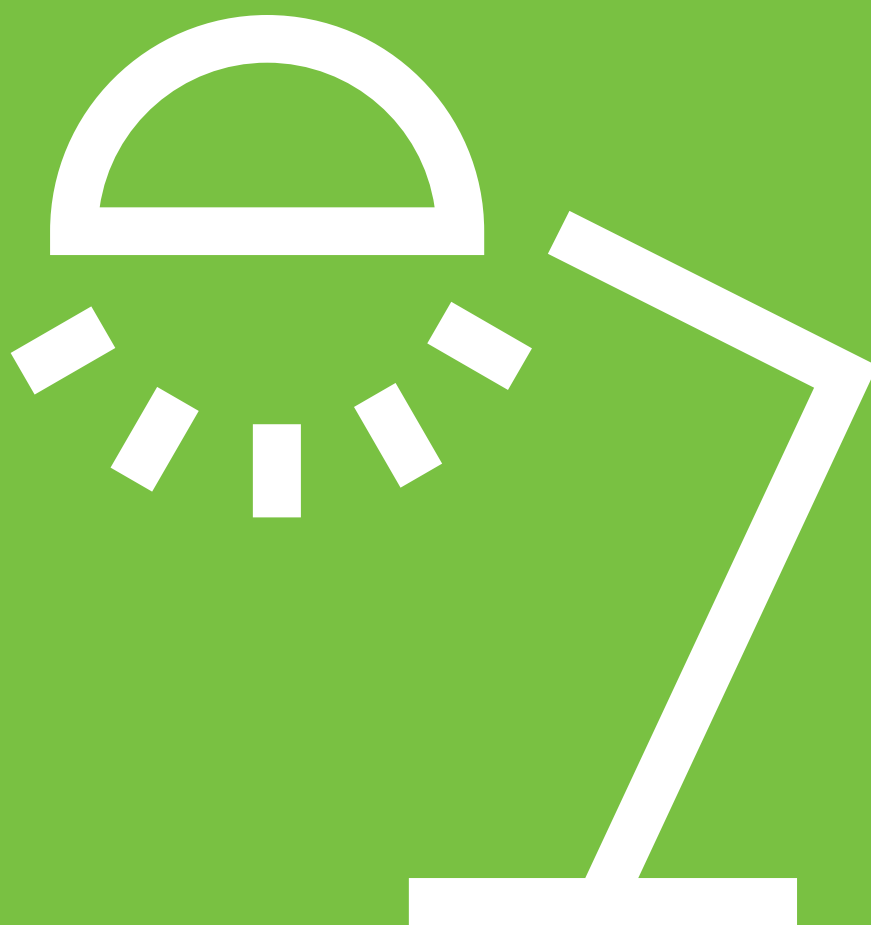




QUICK REFERENCE  
CATALOGUE  
2011

DEVICES AND  
SYSTEMS FOR  
WIRING INSTALLATIONS



URMET IS IN YOUR LIFE

# The Group and Simon Urmet



A **Group** with a capillary consolidated worldwide presence, a Group with skills in all building automation sectors and specialised brands: this makes **Urmet** the most reliable, complete solution for all needs - from homes to shopping centres, airports, hotels and hospitals.

A Group in constant contact with customers via a worldwide retail and service centre network.



## Simon Urmet S.p.A.

**Simon Urmet S.p.A.** is the sum of the experience and collaboration of two major groups, leaders in the production of wiring systems, video door phones, home automation and security systems with a consolidated international presence in common.

**Simon** (Spanish wiring systems market leader) and **Urmet** have established the new company with the target of consolidating a strong presence in Italy over time, investing in innovative, reliable products sold by the Urmet retail network.

**Simon Urmet S.p.A.** operates in perfect synergy with the **Urmet** commercial sales network and the technological experience of Simon, for making fully integrated electrical and electronic devices and systems for both Home and Building Automation applications.

# Quick Reference Catalogue



## SYSTEM INTRODUCTION

The System _____	Page	2-3
The styles: Flexa and Kàdra _____	"	4-9
Functions _____	"	10-11
Installation features _____	"	12-13

## WIRING CATALOGUE

Functions _____	Page	16-27
Supports and modules _____	"	28-29
Flexa, finishes and colours _____	"	30-31
Kàdra, finishes and colours _____	"	32-36

## INTEGRATION CATALOGUE

Communications _____	Page	38-41
Security _____	"	42-47
Hotel systems _____	"	48-49

# Nea: one system, two styles, ple

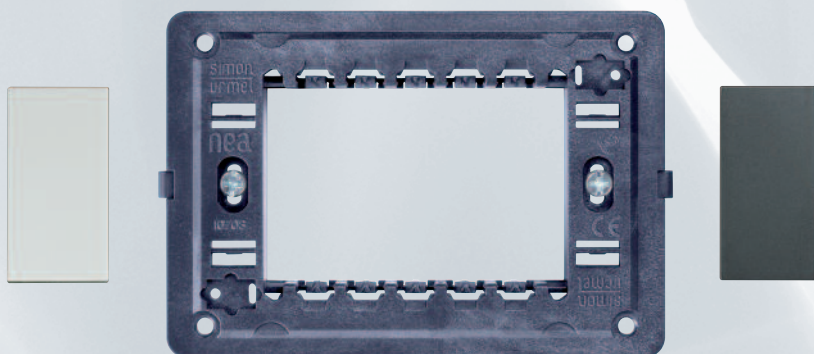
Nea is the new Simon Urmet wiring system: **it is versatile and full of functions for all home, business and public building application needs.**

All devices have a characteristically stream-line appearance and come in two colours: white and anthracite.

Nea series has two cover plate styles which can be installed on a common mounting bracket: **Flexa**, the new **technopolymer** plate with a **simple, natural shape**, perfect for all decors, and **Kàdra**, made of **technopolymer or metal**, super **stylish for who likes to stand out.**

## nea

Nea: one solution, plenty of freedom of choice.  
One mounting bracket, white and anthracite controls, two combined styles.



### flexa new



### kàdra

Monochromatic



Polychromatic



# nty of functions



## The keywords of design

### Contemporary

Nea combines innovation and tradition: catalogue besides article for all modern electrical system functions, includes next-generation controls (intrusion detectors, environment control sensors); a product ranges in tune with your interior decoration choices, from classic to trendy.

**Nea: A small daily revolution.**

### Original

Nea expresses your creativity and style. All homes are ideal stages for Nea: two ranges - Flexa and Kàdra - and a wide range of finishes and colours to play with your style and inclinations.

### Simple

Care to details, attention to materials. These Nea features guarantee high quality products which are simple and safe to install.

Cover plates are made of two materials: technopolymer for Flexa and metal or technopolymer for Kàdra, all in different colours and finishes.

Finding the right solution is simple with Nea.

Homes,  
offices,  
businesses

Versatile  
for all  
spaces

# flexa: the imprint of simplicity



Uniform lines, thin profile and arched shapes. Flexa stands out for its harmonious sleek shapes which perfectly complement all locations: four lines and twenty finishes to imprint your style on simplicity.

## Flexa in technopolymer

Neutral line



Metallized line



Colours line



Special line



# kàdra: the sign of design



Designed by architect Antonio Citterio, in collaboration with Toan Nguyen, this cover plate has a distinctive, regular design that characterises and decorates your spaces. Two versions: monochromatic, made of technopolymer, created to enhance the simple shape of its original design and polychromatic, made of technopolymer and metal, with refined hues.

Dedicated for who likes to stand out.

## Kàdra monochromatic made of technopolymer, neutral and metallized

One total colour that glides evenly across the entire surface to enhance the purity and originality of its style. Tradition and innovation meet in a discreetly bold design.



## Kàdra polychromatic made of technopolymer and metal

A straight shape reinvent the light switch: the central component blends with the colour of the device to create an unprecedented bold effect.

- Technopolymer (14 finishes)
- Metal (24 finishes)

# A touch of style in standard resid

The functionality and design of Nea - with its truly excellent quality/price ratio - is at home at construction sites for new buildings and refurbishments.

Functions are available for all needs (from simple light switches to environmental control devices) and come in two design solutions made of technopolymer, Flexa and Kàdra, either monochromatic or polychromatic.

Dress all places with your personal touch



flexa



Technopolymer,  
neutral, metallized  
and colour finishes



kàdra

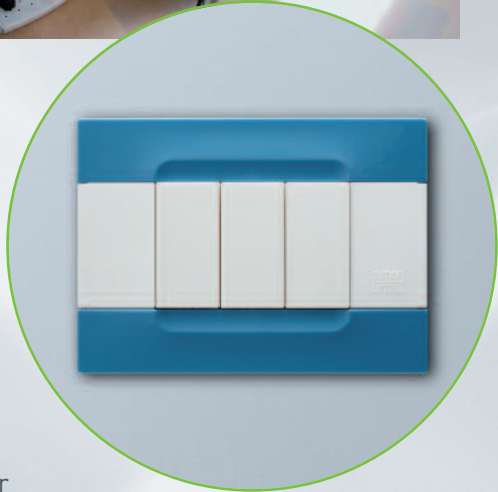


Monochromatic  
technopolymer

# essential constructions



**kàdra**



Polychromatic  
technopolymer



## Stylish integration

The Urmet Group integrations have an extra advantage: Flexa matches with the style of Urmet Signo: audio and video door phones with a linear style and a slim profile. Available in three colours (shiny white, black and platinum).



**signo**

# The choice of quality

Advanced technological functions and high quality material and finish cover plates.

Dedicated to whom does not want to give up the pleasure of choosing, Flexa special finish and Kàdra polychromatic metal blend with the most sophisticated lines of decors.

The sobriety of Flexa easily combines with the most classic styles.

The rational, essential heart of Kàdra brings a touch of style to the trendiest spaces.

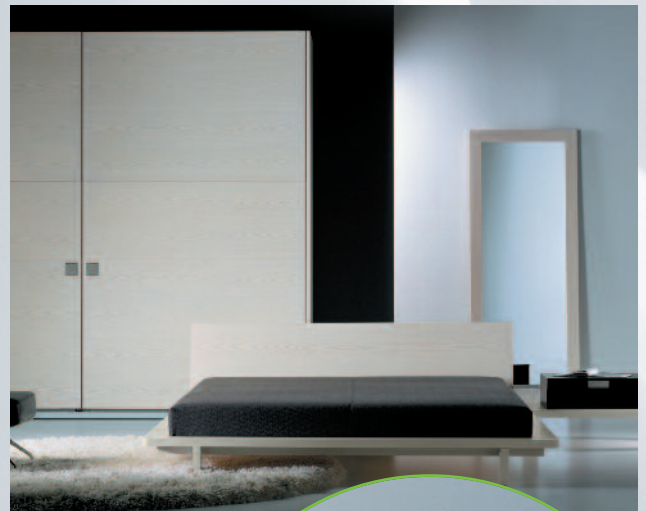
Simply for those needing the best



flexa



Technopolymer and special finishes



kàdra



Metal polychromatic



## A luxury combination

Technology, innovation, design: discover the pleasure of combining a high-value wiring system with a video door phone all created by the same person: Antonio Citterio, in collaboration with Toan Nguyen, has created Kàdra and Folio, the flush-mounted, soft touch hands-free monitor available in two colours (white and black). A sequence of harmonic shapes for decorating your space.



folio

# All the solutions in one catalogue



Nea meets all modern electrical system needs: standard and cutting-edge functions blend with an integrated cover plate design. A complete range that Nea can offer customers after joint efforts with the Urmet Group and complementing the product range.

All functions are available in two colours: white and anthracite.



## Controls

All basic functions in the catalogue (one or two ways switches, reversing switches and push buttons) can all be lit and customized. They are available in 10A version with either screw or quick connection terminals. A full range of electronic functions is also available.



## Power and signal sockets

There is an effective, specific answer for all applications at home or in the office:

- Power sockets (various standards, Italian and international)
- TV and SAT sockets
- Telephone jacks and data network connectors



## Protection and signalling devices

A range which takes each and every system security aspects into account, with versatile, functional solutions including acoustic and optical signalling devices.

---

## Room temperature control

Thermostat timers and basic thermostats are easy to programme. They are available in flush-mounted and wall-mounted versions, coordinated with all models and finishes.



---

## Intrusion alarm

Integrated in Flexa and Kàdra aesthetics, Urmet offers a complete, high-tech professional burglar alarm system.



---

## Communications

Flexa and Kàdra integrate the Urmet audio and video door phone system.

Complementary finishes for coordinating the accessories of your home with care to detail and elements of distinction.



---

## Hotels

Settings in which design plays a key role, contexts in which using evolved devices - as Room Bus readers for monitoring entering and exiting, thermostats for managing room temperature and standard system functions - are mandatory.

In synergy with GLT, Simon Urmet Clinix and Perseo are complete solutions with two cover plate styles.



# The features of a solution designed

## A very modular, complete range

Nea means modularity, with cover plates and 2, 3, 4, 7 module mounting brackets, in addition to 3+3 and 4+4 mounting brackets for Kàdra units.

1, 2 and 3 modules are available for basic controls.

## Protection

Cover and protected boxes of NEA series ensure your installation from risks deriving from humidity, direct water contact, or dusty places.

NEA adding safety to your installation, decorates with style either your garage or cellar, or any other site where electrical devices could be submitted to extreme environmental conditions.

Waterproof is guaranteed by the top performances certified by IMQ, the well recognised Italian certification body.

Just three easy steps make the installation very simple.

## flexa

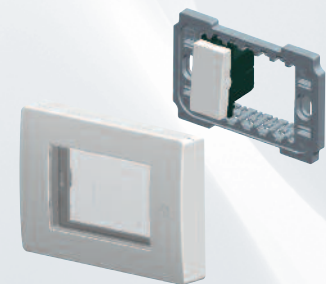


## kàdra



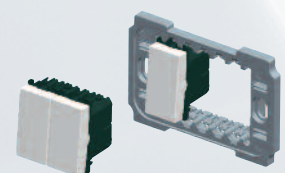
## CARACTERISTICS

- 503 mounting brackets
- IP55 cover

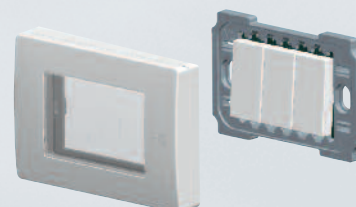


## INSTALLATION

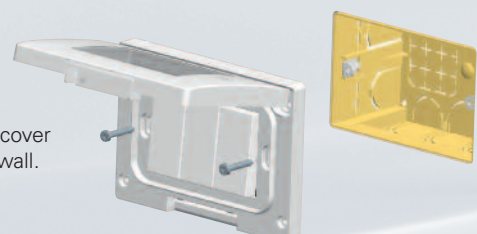
1. Insert front the modules.



2. Click the mounting bracket into the cover.



3. Fix the cover on the wall.



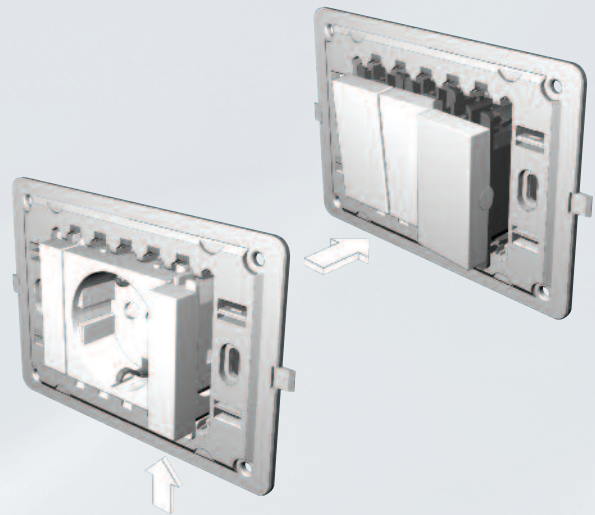
# to be simple

## Front insertion

Product installation is made easier by fitting and removing functional modules from the front. This allows to conveniently work and wire devices.

## Half module

Half module blank cover allows all controls to be centred in any mounting bracket size.



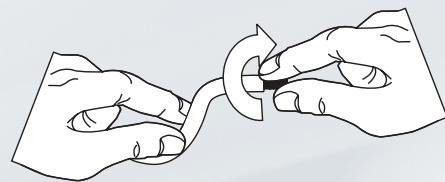
## Quick connection

Wiring is provided with screw less terminals for basic 10A controls.

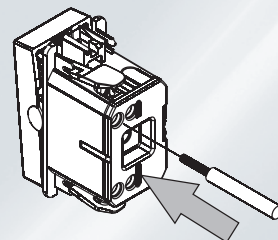
This feature makes installation much faster and ensures constant pressure of the terminal on the wire over time to prevent loosening.

Furthermore, two wires with different cross-section can be connected to the same terminal ensuring the same holding force and the same fastening.

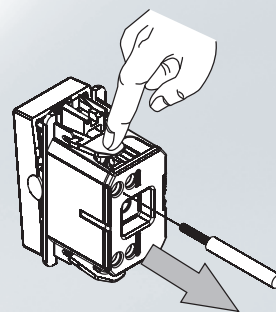
- No screwdriver needed for wiring
- Fast and simple installation
- Totally reliable and IMQ Homologated



1. Strip the wire by approximately 1 cm and twist the copper.



2. Insert the wire in the terminal without using a screwdriver.



3. Press as shown to disconnect the wire, if needed.

# Wiring catalogue





## FUNCTIONS

Basic control devices, blank plates and button covers	Page	16-18
Electronic control devices	"	19
Special control devices	"	19-20
Power, telephone, data, TV-SAT and AV sockets	"	20-23
Acoustic and optical indicating devices	"	23-24
Protection devices	"	25
Devices for comfort	"	26
Technological alarm devices	"	26-27
Accessories	"	27

SUPPORTS AND MODULES	Page	28-29
----------------------	------	-------



## flexa

### FINISHES AND COLOURS

Page 30-31



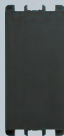


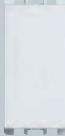


## kàdra

### FINISHES AND COLOURS


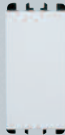

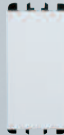
Page 32-36

## BASIC CONTROLS DEVICES, BLANK PLATES AND BUTTON COVERS



### Blank plates and fairlead

						<p><b>10350</b> Blank plate, 1Mod, anthracite</p> <p><b>10351</b> Two blank plates, Half module, anthracite</p> <p><b>10355</b> Fairlead, 1Mod, anthracite</p> <p><b>10350.B</b> Blank plate, 1Mod white</p> <p><b>10351.B</b> Two blank plates, Half module white</p> <p><b>10355.B</b> Fairlead, 1Mod, white</p>
10350	10351	10355	10350.B	10351.B	10355.B	



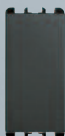
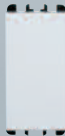


### Single switches 230 Vac

						<p><b>10001</b> Screwless one way switch 10A, 1Mod, anthracite</p> <p><b>10101</b> One way switch with terminals 10A, 1Mod, anthracite</p> <p><b>10161</b> One way switch with terminals 16A, 1Mod, anthracite</p> <p><b>10001.B</b> Screwless one way switch 10A, 1Mod, white</p> <p><b>10101.B</b> One way switch with terminals 10A, 1Mod, white</p> <p><b>10161.B</b> One way switch with terminals 16A, 1Mod, white</p>
10001	10101	10161	10001.B	10101.B	10161.B	

### Bipolar switches 230 Vac

		<p><b>10162</b> Double-pole switch with terminals 16A, 1Mod, anthracite</p> <p><b>10162.B</b> Double-pole switch with terminals 16A, 1Mod, white</p>
10162	10162.B	

### Two ways switches 230 Vac

						<p><b>10003</b> Screwless two ways switch 10A, 1Mod, anthracite</p> <p><b>10103</b> Two ways switch with terminals 10A, 1Mod, anthracite</p> <p><b>10163</b> Two ways switch with terminals 16A, 1Mod, anthracite</p> <p><b>10003.B</b> Screwless two ways switch 10A, 1Mod, white</p> <p><b>10103.B</b> Two ways switch with terminals 10A, 1Mod, white</p> <p><b>10163.B</b> Two ways switch with terminals 16A, 1Mod, white</p>
10003	10103	10163	10003.B	10103.B	10163.B	

## BASIC CONTROL DEVICES, BLANK PLATES AND BUTTON COVERS

### Reversing switches 230 Vac



10004



10104



10164



10004.B



10104.B



10164.B

<b>10004</b>	Screwless reversing switch 10A, 1Mod, anthracite
<b>10104</b>	Reversing switch w/terminals 10A, 1Mod, anthracite
<b>10164</b>	Reversing switch w/terminals 16A, 1Mod, anthracite
<b>10004.B</b>	Screwless reversing switch 10A, 1Mod, white
<b>10104.B</b>	Reversing switch w/terminals 10A, 1Mod, white
<b>10164.B</b>	Reversing switch w/terminals 16A, 1Mod, white

### Unipolar push-buttons 230 Vac



10008



10108



10109



10008.B



10108.B



10109.B



10118



10128/2



10118.B

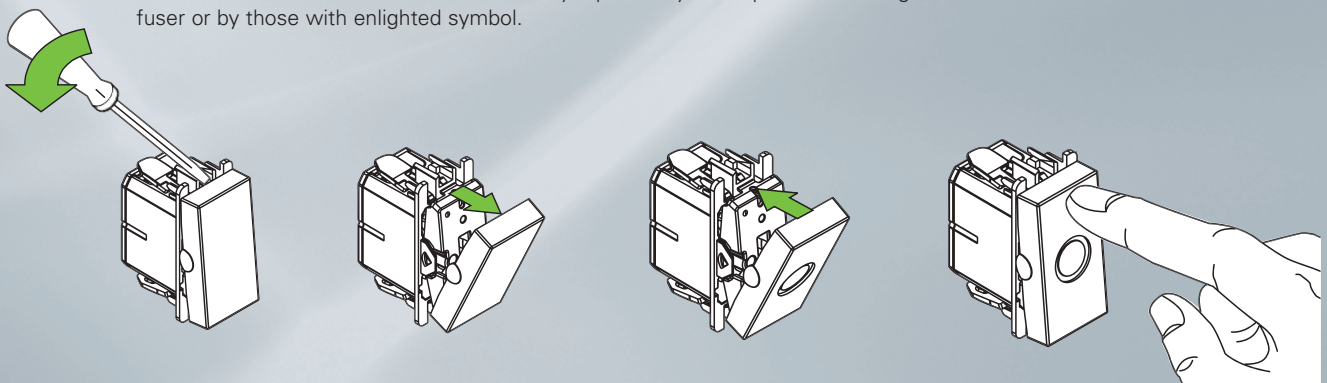


10128/2.B

<b>10008</b>	Screwless push-button 10A, 1Mod, anthracite
<b>10108</b>	Push-button with terminals 10A, 1Mod, anthracite
<b>10109</b>	Push-button with terminals 1P NC 10A, 1Mod, anthracite
<b>10008.B</b>	Screwless push-button 10A, 1Mod, white
<b>10108.B</b>	Push-button with terminals 10A, 1Mod, white
<b>10109.B</b>	Push-button with terminals 1P NC 10A, 1Mod, white
<b>10118</b>	Cord push-button with terminals 10A, 1Mod, anthracite
<b>10128/2</b>	Lightable nametag holder 1P NO 10A with terminals, 2Mod, anthracite
<b>10118.B</b>	Cord push-button with terminals 10A, 1Mod, white
<b>10128/2.B</b>	Lightable nametag holder 1P NO 10A with terminals, 2Mod, white


















### Interchangeable button covers

The button covers of basic controls can be easily replaced by those provided with light diffuser or by those with enlightened symbol.



BASIC CONTROL DEVICES, BLANK PLATES AND BUTTON COVERS

Key covers

						10360 Key cover, 1Mod, anthracite
10360	10360/2	10360/3	10360.B	10360/2.B	10360/3.B	10360/2 Key cover, 2Mod, anthracite
						10360/3 Key, 3Mod, anthracite
						10360.B Key cover, 1Mod, white
						10360/2.B Key cover, 2Mod, white
						10360/3.B Key cover, 3Mod, white
						10361/2 Key cover with "0-1" symbol, f/double-pole switch 2Mod, anthracite
10361/2	10362	10362/2	10361/2.B	10362.B	10362/2.B	10362 Key cover with transp. diffuser, 1Mod, anthracite
						10362/2 Key cover with transp diffuser, 2Mod, anthracite
						10361/2.B Key cover with "0-1" symbol, f/double-pole switch 2Mod, white
						10362.B Key cover with transp. diffuser, 1Mod, white
						10362/2.B Key cover with transp diffuser, 2Mod, white
						10362/3 Key cover with transp. diffuser, 3Mod, anthracite
10362/3	10363	10363/2	10362/3.B	10363.B	10363/2.B	10363 Key cover with transp. diffuser and bell symbol 1Mod, anthracite
						10363/2 Key cover with transp. diffuser and bell symbol 2Mod, anthracite
						10362/3.B key cover with transp. diffuser, 3Mod, white
						10363.B Key cover with transp. diffuser and bell symbol 1Mod, white
						10363/2.B Key cover with transp. diffuser and bell symbol 2Mod, white
						10364 Key cover w/transp. diffuser and light symbol 1Mod, anthracite
10364	10364/2	10365	10364.B	10364/2.B	10365.B	10364/2 Key cover w/transp. diffuser and light symbol 2Mod, anthracite
						10365 Key over w/transp. diffuser and key symbol 1Mod, anthracite
						10364.B Key cover w/transp. diffuser and light symbol 1Mod, white
						10364/2.B Key cover w/transp. diffuser and light symbol 2Mod, white
						10365.B Key over w/transp. diffuser and key symbol 1Mod, white
						10365/2 Key cover w/transp. diffus. and key symbol 2Mod, anthracite
10365/2			10365/2.B			10365/2.B Key cover w/transp. diffus. and key symbol 2Mod, white

## ELECTRONIC CONTROL DEVICES

### Electronic switches



10126



10530



10126.B



10530.B



10533



10550



10533.B



10550.B

**10126** Timed output infrared sensor w/terminals 1P NO 6A, 1Mod, anthracite

**10530** Rotary dimmer for resistive loads 100-500W, 1Mod, anthracite

**10126.B** Timed output infrared sensor w/terminals 1P NO 6A, 1Mod, white

**10530.B** Rotary dimmer for resistive loads 100-500W, 1Mod, white

**10533** Rotary dimmer with push for resistive loads 100-500W, 1Mod, anthracite

**10550** Push-button dimmer for resistive inductive loads 60-500VA, 1Mod, anthracite

**10533.B** Rotary dimmer with push for resistive loads 100-500W, 1Mod, white

**10550.B** Push-button dimmer for resistive inductive loads 60-500VA, 1Mod, white

## SPECIAL CONTROL DEVICES

### Special switches



10138



10139



10138.B



10139.B



10140



10650



10651



10140.B



10650.B

**10138** Double push-button 1P+1P NO 10A with terminals , 1Mod keys, anthracite

**10139** Interlocked double push-button 1P+1P NO 10A with terminals, 1Mod keys, anthracite

**10138.B** Double push-button 1P+1P NO 10A with terminals, 1Mod keys, white

**10139.B** Interlocked double push-button 1P+1P NO 10A with terminals, 1Mod keys, white

**10140** Change over switch w/terminals 3 positions, 10A 1Mod key, anthracite

**10650** Pocket badge switch 3 mod, anthracite

**10651** Tag transponder badge for art. 10650 and 10650.B

**10140.B** Change over switch w/terminals 3 positions, 10A 1Mod key, white

**10650.B** Pocket badge switch 3 mod, white

SPECIAL CONTROL DEVICES 230 VAC

Special switches



10141



10142



10141.B



10142.B



10148



10149



10148.B



10149.B

- 10141 Double-pole key operated switch with terminals, 10A, 1Mod, anthracite
- 10142 Double-pole key operated switch with terminals (key removable only in "O" position), 2P 10A, 1 Mod, anthracite
- 10141.B Double-pole key operated switch with terminals, 10A, 1Mod, white
- 10142.B Double-pole key operated switch with terminals (key removable only in "O" position), 2P 10A, 1 Mod, white
- 10148 Double-pole key operated push-button w/terminals, 10A, 1Mod, anthracite
- 10149 Double-key operated push-button with terminals (key removable only in "O" position), 2P 10A, 1 mod, anthracite
- 10148.B Double-pole key operated push-button w/terminals, 10A,1Mod, white
- 10149.B Double-key operated push-button with terminals (key removable only in "O" position), 2P 10A, 1 mod, white

POWER, TELEPHONE, DATA, TV-SAT AND AV SOCKETS

Italian standard and universal sockets



10301



10302



10303



10301.B



10302.B



10303.B



10309/2



10310/2



10309/2.B



10310/2.B

- 10301 Italian socket P11 with term. 2P+N 10A 250V, 1Mod, anthracite
- 10302 Italian socket P17 with term. 2P+N 16A-250V, 1Mod, anthracite
- 10303 Italian socket P11+P17 with term. 2P+N 16A-250V, 1Mod, anthracite
- 10301.B Italian socket P11 with term. 2P+N 10A 250V, 1Mod, white
- 10302.B Italian socket P17 with term. 2P+N 16A-250V, 1Mod, white
- 10303.B Italian socket P11+P17 with term. 2P+N 16A-250V, 1Mod, white
- 10309/2 Italian socket P30, with terminals, 2P+T 16A-250V, 2Mod, anthracite
- 10310/2 EU universal socket with terminals 2P+N 16A-250V, 2Mod, anthracite
- 10309/2.B Italian socket P30, with terminals, 2P+T 16A-250V, 2Mod, white
- 10310/2.B EU universal socket with terminals 2P+N 16A-250V, 2Mod, white

## POWER, PHONE, DATA, TV-SAT AND AV SOCKETS

### Italian standard and universal sockets



10315/2



10325



10315/2.B



10325.B

- 10315/2** EU/USA universal socket with terminals 2P+N 16A 250V 2Mod, anthracite
- 10325** Polarisèd socket for low voltage circuits 6A-24V 1Mod, anthracite
- 10315/2.B** EU/USA universal socket with terminals 2P+N 16A 250V 2Mod, white
- 10325.B** Polarisèd socket for low voltage circuits 6A-24V 1Mod, white

### International standard sockets



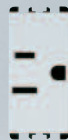
10305



10320/2



10321/2



10305.B



10320/2.B



10321/2.B

- 10305** USA/SAUDI polarized socket 2P+N 15A 127V, 2Mod, anthracite
- 10320/2** Schuko socket 2P+N 16A 250V 2Mod, anthracite
- 10321/2** French socket 2P+N 16A 250V, 2Mod, anthracite
- 10305.B** USA/SAUDI polarized socket 2P+N 15A 127V, 2Mod, white
- 10320/2.B** Schuko socket 2P+N 16A 250V 2Mod, white
- 10321/2.B** French socket 2P+N 16A 250V, 2Mod, white

### Phone sockets



10411



10412



10411.B



10412.B

- 10411** Screwless phone socket RJ11 6pos. 4cont. 1Mod, anthracite
- 10412** Screwless phone socket RJ12 6pos. 6cont. 1Mod, anthracite
- 10411.B** Screwless phone socket RJ11 6pos. 4cont. 1Mod, white
- 10412.B** Screwless phone socket RJ12 6pos. 6cont. 1Mod, white

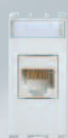
### Data sockets



10445E



10446



10445E.B



10446.B

- 10445E** Data jack RJ45 cat. 5e UTP, 1Mod, anthracite
- 10446** Data jack RJ45, cat6, 1 mod anthracite
- 10445E.B** Data jack RJ45 cat. 5e UTP, 1Mod, white
- 10446.B** Data jack RJ45, cat6, 1 mod white

## POWER, PHONE, DATA, TV-SAT AND AV SOCKETS

### Sockets for dedicated mains line



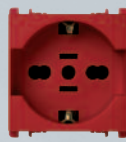
10303.R



10309/2.R



10310/2.R



10315/2.R

- 10303.R Italian standard P11+P17 socket  
2P+N 16A-250V, 1Mod, Red
- 10309/2.R Italian standard P30 w/termin.  
2P+N 16A-250V, 2Mod, Red
- 10310/2.R EU universal socket w/termin.  
2P+N 16A-250V, 2Mod, Red
- 10315/2.R EU/USA universal socket with  
terminals 2P+N 16A-250V  
2Mod, Red

### TV-SAT jacks



10401



10405



10407



10401.B



10405.B



10407.B

- 10401 TV outlet 0,5dB IEC male connector, 1Mod, anthracite
- 10405 Loop-through TV outlet 5dB male connector, 1Mod, anthracite
- 10407 TV-SAT outlet 0,5dB F connector, 1Mod, anthracite
- 10401.B TV outlet 0,5dB IEC male connector, 1Mod, white
- 10405.B Loop-through TV outlet 5dB male connector, 1Mod, white
- 10407.B TV-SAT outlet 0,5dB F connector, 1Mod, white



10410



10414



10418



10410.B



10414.B

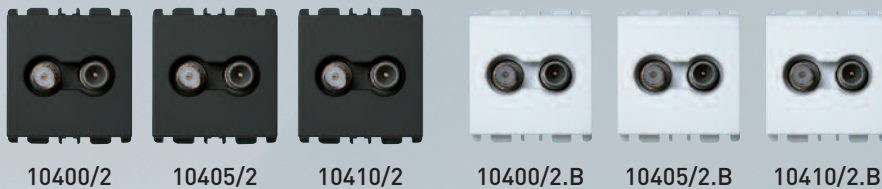


10418.B

- 10410 Loop-through TV outlet 10dB IEC male connector, 1Mod, anthracite
- 10414 Loop-through TV outlet 14dB IEC male connector, 1Mod, anthracite
- 10418 Loop-through TV outlet 18dB IEC male connector, 1Mod, anthracite
- 10410.B Loop-through TV outlet 10dB IEC male connector, 1Mod, white
- 10414.B Loop-through TV outlet 14dB IEC male connector, 1Mod, white
- 10418.B Loop-through TV outlet 18dB IEC male connector, 1Mod, white

## POWER, PHONE, DATA, TV-SAT AND AV SOCKETS

### TV-SAT jacks



- 10400/2** Loop-through TV-SAT demix outlet 2dB IEC male/F connector, 2Mod, anthracite
- 10405/2** Loop-through TV-SAT demix outlet 5dB IEC male/F connector, 2Mod, anthracite
- 10410/2** Loop-through TV-SAT demix outlet 10dB IEC male/F connector, 2Mod, anthracite
- 10400/2.B** Loop-through TV-SAT demix outlet 2dB IEC male/F connector, 2Mod, white
- 10405/2.B** Loop-through TV-SAT demix outlet 5dB IEC male/F connector, 2Mod, white
- 10410/2.B** Loop-through TV-SAT demix outlet 10dB IEC male/F connector, 2Mod, white
- 10414/2** Loop-through TV-SAT demix outlet 14dB IEC male/F connector, 2Mod, anthracite
- 10418/2** Loop-through TV-SAT demix outlet 18dB IEC male/F connector, 2Mod, anthracite
- 10414/2.B** Loop-through TV-SAT demix outlet 14dB IEC male/F connector, 2Mod, white
- 10418/2.B** Loop-through TV-SAT demix outlet 18dB IEC male/F connector, 2Mod, white
- 99475** 75 OHM isolated load resistor

### Connectors and coaxial sockets



- 10458** Coaxial BNC socket for RG58 cable crimping, 1Mod, anthracite
- 10459** Coaxial BNC socket for RG59/62/RX9 cable crimping, 1Mod, anthracite
- 10460** Hi-Fi socket, 1Mod, anthracite
- 10458.B** Coaxial BNC socket for RG58 cable crimping, 1Mod, white
- 10459.B** Coaxial BNC socket for RG59/62/RX9 cable crimping, 1Mod, white
- 10460.B** Hi-Fi socket, 1Mod, white

## ACOUSTIC AND OPTICAL INDICATING DEVICES

### Acoustic signalisation modules



10250



10255



10260



10250.B



10255.B



10260.B



10265



10253/2



10265.B



10253/2.B

10250	Bell 12V AC 50 Hz, 1 mod, anthracite
10255	Buzzer 12V AC 50 Hz, 1 mod, anthracite
10260	Bell 230V AC 50 Hz, 1 mod, anthracite
10250.B	Bell 12V AC 50 Hz, 1 mod, white
10255.B	Buzzer 12V AC 50 Hz, 1 mod, white
10260.B	Bell 230V AC 50 Hz, 1 mod, white
10265	Buzzer 230V AC 50 Hz, 1 mod, anthracite
10253/2	Two melodies electronic chime with adjustable volume 12V AC or 12V, 2 mod, anthracite
10265.B	Buzzer 230V AC 50 Hz, 1 mod, white
10253/2.B	Two melodies electronic chime with adjustable volume 12V AC or 12V, 2 mod, white

### Visual signalisation modules



10280



10281



10282



10280.B



10281.B



10282.B



10283



10284



10285



10283.B



10284.B



10285.B



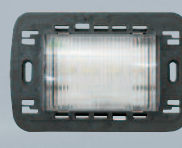
10297



10297.B



10296



10298

10280	Transparent diffuser with terminals, 1Mod, anthracite
10281	Orange diffuser with terminals, 1Mod, anthracite
10282	Red diffuser with terminals, 1Mod, anthracite
10280.B	Transparent diffuser with terminals, 1Mod, white
10281.B	Orange diffuser with terminals, 1Mod, white
10282.B	Red diffuser with terminals, 1Mod, white
10283	Green diffuser with terminals, 1Mod, anthracite
10284	Trans. diff. w/12-24 VAC bicolor led screw term. 1Mod, anthracite
10285	Trans. diff. /12-24 VAC bicolor led screw term. 1Mod, anthracite
10283.B	Green diffuser with terminals, 1Mod, white
10284.B	Trans. diff. w/12-24 VAC bicolor led screw term. 1Mod, white
10285.B	Trans diff. /12-24 VAC bicolor led screw term. 1Mod, white
10297	Electronic detachable torch, 1Mod, anthracite
10297.B	Electronic detachable torch, 1Mod, white
10296	Emergency and step marker lamp 230V 3 mod
10298*	Step marker lamp 230V 3 mod

## PROTECTION DEVICES



10500



10502



10505/6



10500.B



10502.B



10505/6.B



10505/10



10505/16



10511/6



10505/10.B



10505/16.B



10511/6.B



10511/10



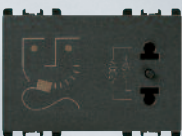
10511/16



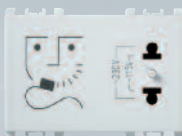
10511/10.B



10511/16.B



10521



10521.B

10500	Fuse carrier 1P 16A 250 VAC, 1Mod, anthracite
10502	Overvoltage suppressor 250 VAC, 1Mod, anthracite
10505/6	Thermal magnetic switch 1P+N C 6A, 1Mod, anthracite
10500.B	Fuse carrier 1P 16A 250 VAC, 1Mod, white
10502.B	Overvoltage suppressor 250 VAC, 1Mod, white
10505/6.B	Thermal magnetic switch 1P+N C 6A, 1Mod, white
10505/10	Thermal magnetic switch 1P+N C 10A, 1Mod, anthracite
10505/16	Thermal magnetic switch 1P+N C 16A, 1Mod, anthracite
10511/6	Residual current circuit breaker 1P+N C6A, 2Mod, anthracite
10505/10.B	Thermal magnetic switch 1P+N C 10A, 1Mod, white
10505/16.B	Thermal magnetic switch 1P+N C 16A, 1Mod, white
10511/6.B	Residual current circuit breaker 1P+N C6A, 2Mod, white
10511/10	Residual current circuit breaker 1P+N C 10A, 2Mod, anthracite
10511/16	Residual current circuit breaker 1P+N C 16A, 2Mod, anthracite
10511/10.B	Residual current circuit breaker 1P+N C 10A, 2Mod, white
10511/16.B	Residual current circuit breaker 1P+N C 16A, 2Mod, white
10521	Shaver socket 230V, 3 mod, anthracite
10521.B	Shaver socket 230V, 3 mod, white

## CLIMATE CONTROLS

Room temperature controls and fan coil



10611



10621



10611.B



10621.B



10632



10632.B

**10611** Electronic thermostat 230V 50-60HZ, 3Mod, Anthracite

**10621** Fan coil electronic thermostat 230V 50-60HZ, 3Mod, Anthracite

**10611.B** Electronic thermostat 230V 50-60HZ, 3Mod, white

**10621.B** Fan coil electronic thermostat 230V 50-60HZ, 3M, white

**10632** Battery weekly chronothermostat, 3Mod

**10632.B** Battery weekly chronothermostat, 3Mod, white



1430/3\*



1430/2\*

**1430/3\*** Weekly thermostat timer  
KLIMAT ZOOM

**1430/2\*** Weekly thermostat timer  
KLIMAT PRO7

## TECHNOLOGICAL ALARM DEVICES



10660



10661



10660.B



10661.B

**10660** Power supply 230V-12C 2Mod, for gas/flood detector, anthracite

**10661** Methane and GPL gas detector, 2Mod, anthracite





**10660.B** Power supply 230V-12V 2Mod, for gas/flood detector, white

**10661.B** Methane and GPL gas detector, 2Mod, white

\* For technical and sales informations on these products please contact Urmet Export Department at [info@urmetdomus.it](mailto:info@urmetdomus.it)

## TECHNOLOGICAL ALARM DEVICES

			<p><b>10671</b> Flood sensor with probe, 2Mod, anthracite</p> <p><b>10671.B</b> Flood sensor with probe, 2Mod, white</p> <p><b>10679</b> Flood probe for module 10671 e 10671.B</p>
10671	10671.B	10679	

				<p><b>1450/1*</b> Methane Gas Detector TITANO MET</p> <p><b>1450/100*</b> Normally open solenoid valve, 230 Vac</p> <p><b>1450/112*</b> Normally open solenoid valve, 12 Vdc</p>
	1450/1*	1450/100*	1450/112*	

## ACCESSORIES

				<p><b>10290/230.V</b> Green led 230V without cables</p> <p><b>10291/12.V</b> Green led 12-24V with cables</p> <p><b>10290/230.B</b> White led 230V without cables</p> <p><b>10291/12.B</b> White led 12-24V with cables</p>
10290/230.V	10291/12.V	10290/230.B	10291/12.B	
				<p><b>10291/230.V</b> Green led 230V with cables</p> <p><b>10291/230.B</b> White led 230V with cables</p> <p><b>99040</b> Spare battery for detachable torch, 1Mod</p> <p><b>99703</b> Transparent protection cover 3 mod</p>
10291/230.V	10291/230.B	99040	99703	
				<p><b>99719</b> 100 pieces of 19mm screws for brackets fixation</p> <p><b>99735</b> 100 pieces of 35mm screws for brackets fixation</p> <p><b>99750</b> 100 pieces of 50mm screws for brackets fixation</p>
99719	99735	99750		

## COVER AND PROTECTED BOXES

				<p><b>12503</b> 3 modules surface enclosure IP55 Grey RAL 7035</p> <p><b>12513.GR</b> 3 modules covers for 3 modules flush mounting boxes IP55 Grey RAL7035</p> <p><b>12513.BN</b> 3 modules covers for 3 modules flush mounting boxes IP55 White Nea</p> <p><b>12513.AN</b> 3 modules covers for 3 modules flush mounting boxes IP55 Anthracite Nea</p>
12503	12513.GR	12513.BN	12513.AN	

\* For technical and sales informations on these products please contact Urmet Export Department at [info@urmetdomus.it](mailto:info@urmetdomus.it)

# flexa

## REFERENCE TABLE



**10702**

Mounting bracket for 60mm diameter embedding boxes, 2Mod



2 modules



**11802.xx\*\***

Flexa 2 mod technopolymer



**10702.G**

Mounting bracket w/claws for 60mm diameter embedding boxes, 2Mod



**10703**

Mounting bracket w/screws for 503 squared embedding boxes, 3Mod



3 modules



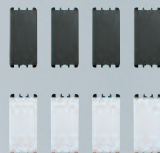
**11803.xx\*\***

Flexa 3 mod technopolymer

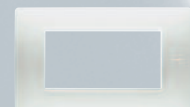


**10704**

Mounting bracket w/screws for 504 squared embedding boxes, 4Mod



4 modules



**11804.xx\*\***

Flexa 4 mod technopolymer

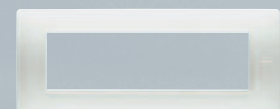


**10707**

Mounting bracket w/screws for 506 squared embedding boxes, 7Mod



7 modules



**11807.xx\*\***

Flexa 7 mod technopolymer

\*\* Complete plate code with colour code as shown on the following pages.

## REFERENCE TABLE

<b>10702</b>	<b>10702.G</b>	2 modules	<b>10802.xx*</b>	<b>10902.xx**</b>
Mounting bracket for 60mm diametre embedding boxes, 2Mod	Mounting bracket w/claws for 60mm diametre embedding boxes, 2Mod		Kàdra 2 mod technopolymer	Kàdra 2 mod metal
<b>10703</b>		3 modules	<b>10803.xx*</b>	<b>10903.xx**</b>
Mounting bracket W/screws for 503 squared embedding boxes, 3Mod			Kàdra 3 mod technopolymer	Kàdra 3 mod metal
<b>10704</b>		4 modules	<b>10804.xx*</b>	<b>10904.xx**</b>
Mounting bracket w/screws for 504 squared embedding boxes, 4Mod			Kàdra 4 mod technopolymer	Kàdra 4 mod metal
<b>10707</b>		7 modules	<b>10807.xx*</b>	<b>10907.xx**</b>
Mounting bracket w/screws for 506 squared embedding boxes, 7Mod			Kàdra 7 mod technopolymer	Kàdra 7 mod metal
<b>10723</b>		3+3 modules	<b>10823.xx**</b>	
Mounting bracket w/screws for 3+3Mod embedding boxes			Kàdra 3+3 mod technopolymer	
<b>10724</b>		4+4 modules	<b>10824.xx**</b>	
Mounting bracket w/screws for 4+4Mod embedding boxes			Kàdra 4+4 mod technopolymer	

\* Complete plate code with colour code as shown on the following pages.

\*\* 3+3 and 4+4 technopolymer Helsinki White and Auckland Black switch plate versions are available.

COVER PLATES IN **TECHNOPOLYMER**

---

Neutral line



**.BN**  
White Nea



**.AN**  
Anthracite Nea



**.AV**  
Ivory



**.PV**  
Dust grey



**.SB**  
Sand

Metallized line



**.AL**  
Alluminium



**.AC**  
Dark iron



**.TT**  
Titanium



**.OS**  
Crystal gold



**.BR**  
Bronze

## COVER PLATES IN **TECHNOPOLYMER**

---

### Colours line



**.BG**  
Icy white



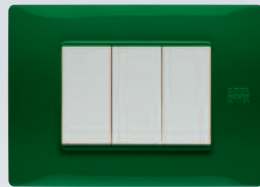
**.NA**  
Black



**.RS**  
Red



**.BL**  
Blue



**.VR**  
Green

### Special line



**.IL**  
Stainless steel



**.OL**  
Gold



**.GF**  
Graphite



**.WE**  
Wengè



**.RV**  
Oak

POLYCHROME COVER PLATES IN TECHNOPOLYMER

---



**.01**  
White Helsinki



**.07**  
Grey Berlin



**.11**  
Red Pechino



**.15**  
Blue Sidney



**.27**  
Brown L'Avana



**.30**  
Orange San Francisco



**.34**  
Yellow Lisbona

POLYCHROME COVER PLATES IN METAL

Colours



**.50**  
White Vega

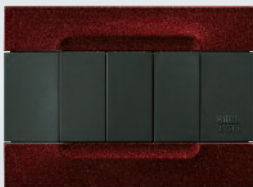


**.54**  
Black Universo



**.58**  
Red Orione

Metallic finishing



**.77**  
Bordeaux



**.78**  
Blue



**.88**  
Red

Shiny metal



**.90**  
Nickel



**.91**  
Dark Nickel



**.92**  
Black Nickel

Shiny metal



**.96**  
Gold

Brushed finishing



**.82**  
Copper



**.84**  
Brass

POLYCHROME COVER PALTES IN TECHNOPOLYMER

---



**.B.04**  
Black Auckland



**.B.07**  
Grey Berlino



**.B.11**  
Red Pechino



**.B.15**  
Blue Sidney



**.B.16**  
Cian Atene



**.B.30**  
Orange San Francisco



**.B.34**  
Yellow Lisbona

POLYCHROME COVER PLATES IN METAL

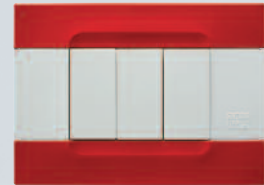
Colored



**.B.50**  
White Vega



**.B.54**  
Black Universo



**.B.58**  
Red Orione

Metallic finishing



**.B.77**  
Bordeaux



**.B.78**  
Blue



**.B.88**  
Red

Shiny metal



**.B.90**  
Nickel



**.B.91**  
Dark Nickel



**.B.92**  
Black Nickel

Shiny metal



**.B.96**  
Gold

Brushed finishing



**.B.82**  
Copper



**.B.84**  
Brass

## MONOCHROME COVER PLATES IN TECHNOPOLYMER (\*)

---

### Neutral Series



**.B.01\*\***  
White Helsinki



**.AV**  
Ivory



**.04\*\***  
Black Auckland

### Metallized Series



**.TT**  
Titanium



**.AR**  
Silver



**.AC**  
Iron



**.GD**  
Gold

\* Monochrome colours can be ordered for 2,3,4,7, modularity with the exception of White Helsinki and Black Auckland that are also available on 3+3 and 4+4 format

\*\* To order 3 modules cover plates, please, refer to the following part number 10803.B (White Helsinki) and 10803 (Black Auckland)



# Integration



The Urmet Group synergies have complemented the catalogue with an integrated offering: communication systems, anti-intrusion products and hotel solutions are coordinated with Nea wiring system Flexa and Kàdra design.

Urmet is in your life. More choice for style.

## COMMUNICATIONS

Folio _____	Page	40
Signo _____	"	41

## SECURITY

1061 system _____	"	44
1067 system _____	"	45
1063 system _____	"	46
System complements _____	"	47

## HOTELS

Systems for hotels _____	"	48-49
--------------------------	---	-------

- communications catalogue

## Urmet audio and video door phones: co



In homes and offices, audio and video door phones welcome guests and announce the style of your space.

Urmet has two ranges developed in synergy with Simon Urmet to offer products coordinated with Nea wiring system Flexa and Kàdra designs.

- FOLIO
- SIGNO





# ommunication furnishes your space



# Folio



Technology meets design in a small, luxurious object, placing the accent on high performance and care for details. Designed by Antonio Citterio in collaboration with Toan Nguyen, Folio is the answer whenever you are seeking a stylish design and modern materials. Innovative functions and commands are shown on a 3.5" colour OSD display for guided, user-friendly use.

Up-to-date solutions implemented in the new soft touch technology. Available in two colours - black and white, both with shiny hi-tech treatment - Folio can be flush-mounted with minimum protrusion from the wall (only 9 mm).



1706/1\* - 1706/5\* - 1706/7\*



1706/2\* - 1706/6\* - 1706/8\*

**1706/1** Folio flush-mounted hands-free colour video door phone, black front panel. For 2GO! system.

**1706/2** Folio flush-mounted hands-free colour video door phone, white front panel. For 2GO! system.

**1706/5** Folio flush-mounted video door phone. For 2Voice system. Black.

**1706/6** Folio flush-mounted video door phone. For 2Voice system. White.

**1706/7** Folio flush-mounted video door phone. For IPerVoice system. Black.

**1706/8** Folio flush-mounted video door phone. For IPerVoice system. White.

Dimensions:  
148 x 170 x 54 mm (L x H x P) \*\*

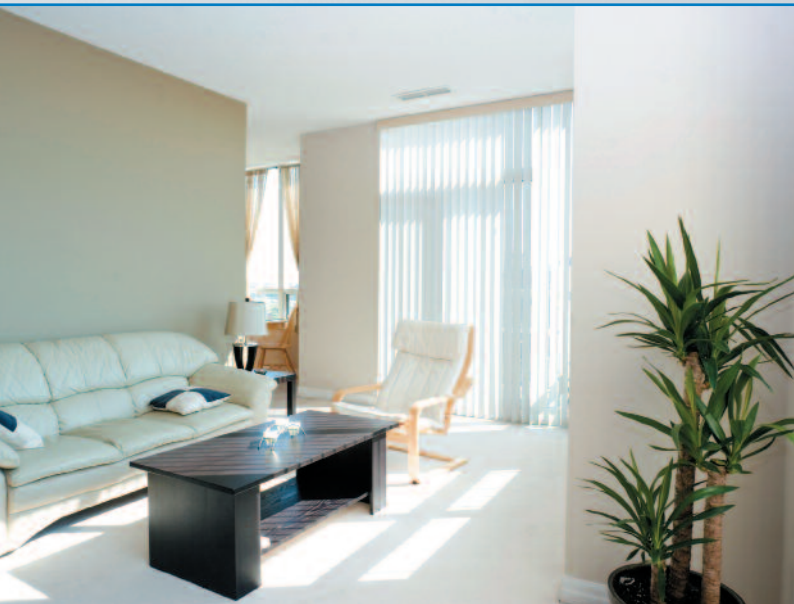
\*Coordinated with Simon Urmet Kàdra wiring systems.

## SYSTEMS COMPATIBILITY TABLE

2Voice	IPerVoice	2GO!
--------	-----------	------

\*\* For technical and sales informations on these products please contact Urmet Export Department at [info@urmetdomus.it](mailto:info@urmetdomus.it)

# Signo



A slim touch, a minimal sweep designed by Antonio Citterio.

The perfectly flat surface blends into the total lack of edges, giving life to an extremely compact monitor and door phone, which is the slimmest in its class.

Clear lines, versatile finishes (three colours are available) and high visible with two 4" colour and 4.5" b/w versions.

Discretion has a character of its own and is at home in the very best interior design.



1740/40\*



1740/41\*



1740/42\*

**1740/1** B/W Video door phone Signo. White.

**1740/40** Colour Video door phone Signo. White.

**1740/41** Colour Video door phone Signo. Black.

**1740/42** Colour Video door phone Signo. Platinum.

Dimensions:  
205 x 225 x 50 mm (L x H x P)



1140/1\*



1140/41\*



1140/42\*

**1140/1** Door phone Signo. White.

**1140/41** Door phone Signo. Black.

**1140/42** Door phone Signo. Platinum.

Dimensions:  
85 x 225 x 42 mm (L x H x P) \*\*

\*Coordinated with Simon Urmet Nea Flexa wiring systems.

## SYSTEMS COMPATIBILITY TABLE

2Voice	IPvoice	2GO!	Bibus VOP	Coax	5 fili	4+n
--------	---------	------	-----------	------	--------	-----

Signo is compatible with all analog and digital systems.

\*\* For technical and sales informations on these products please contact Urmet Export Department at [info@urmetdomus.it](mailto:info@urmetdomus.it)

- security catalogue

# Anti-intrusion is integrated with

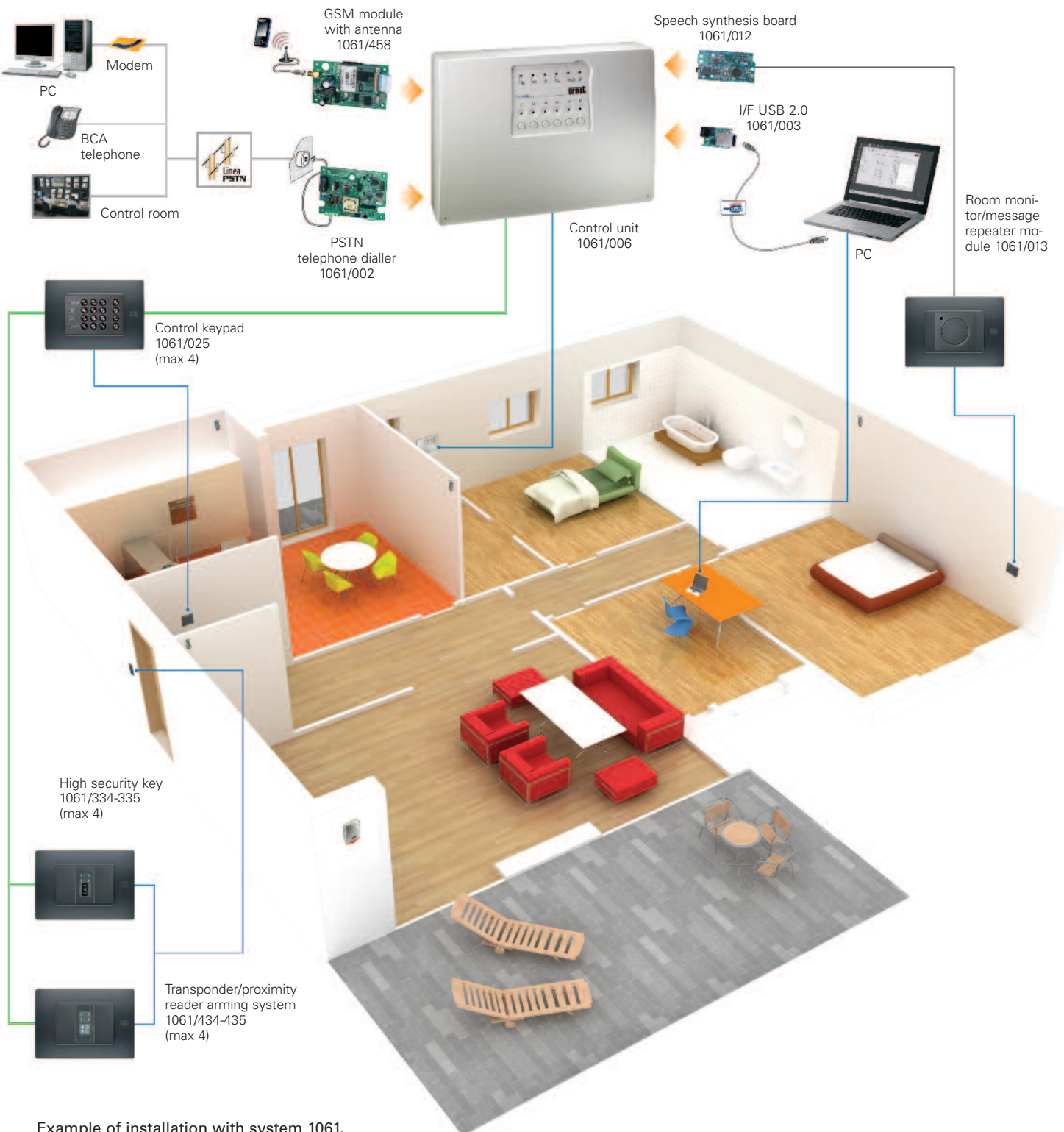


The increasing demand for safety at home and in public places (offices, industries and shops) means that more devices dedicated to protecting from undesired access and theft are being installed. By integrating the high performance and reliability of Urmet systems with the style of Simon Urmet Nea you can count on efficient anti-intrusion solutions that blends into your space with discretion.

- 1061 SYSTEM
- 1067 SYSTEM
- 1067 SYSTEM
- SYSTEM COMPLEMENTS



# the wiring system



Example of installation with system 1061.

# 1061 System



1061 anti-intrusion system (IMQA I LIV type-approved) is compact, reliable, and ideal for small-sized installations (homes or small businesses).

Two versions: 4 or 6 lines. Versatile performance: the system dialogues on a bus line for managing four independent programmable zones, 4/6 alarm detector inputs and 4/3 actuator outputs. User-friendly interface. The system can be programmed both by PC (also remotely) and by DTMF. Voice and digital communicators transmit information to users and control rooms. The following functions can be managed: robbery alarm, panic alarm technological alarm. All visible parts are perfectly integrated with Flexa and Kàdra cover plates.



1061/006



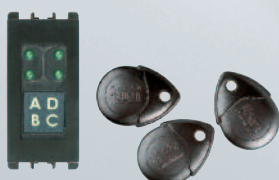
1061/025



1061/334



1061/335



1061/434



1061/435



1061/013

**1061/004\*** Four line microprocessor control unit. IMQA Level 1.

**1061/006\*** Six line microprocessor control unit. IMQA Level 1.

**1061/025\*** LED Keypad IMQA Level 1.

**1061/334\*** High security key set. IMQA Level 1.  
The kit consists of: 3 electronic keys - 1 arming device with Simon Urmet NEA series adapter.

**1061/335\*** Supplementary arming device IMQA Level 1.

This module is used to arm/disarm the system using an electronic key. Included: 1 Simon Urmet NEa series adapter.

**1061/434\*** High security transponder kit IMQA Level 1.

The kit consists of: 3 proximity keys - 1 proximity reader with Simon Urmet Nea series adapter.

**1061/435\*** Supplementary proximity reader. IMQA Level 1.

This module is used to arm/disarm the system using a transponder key. Included: 1 Simon Urmet Nea series adapter.

**1061/013\*** Room monitor/message repeater module

This module is used for room monitoring over the telephone and for playing messages in local mode.

\* For technical and sales informations on these products please contact Urmet Export Department at [info@urmetdomus.it](mailto:info@urmetdomus.it)

# 1067 System



This innovative system is ideal for medium-sized installations (homes and other) where high performance is needed: 8 inputs, expandable up to 32, integrated access monitoring and video surveillance functions, and made ready for fire alarm, flood alarm and home automation. A truly complete system with the additional advantage of being very easy to use. It can be managed remotely via Web or phone (landline or mobile).

Installation and programming operations are extremely simple and external devices, such as sensors, arming switches and keypads, are fitted directly in Nea Flexa and Kàdra devices.



1067/032



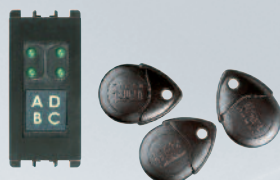
1067/021



1067/334



1067/335



1067/434



1067/435

**1067/032\*** Eight input bus control up to 32, with 1,5A power unit IMQA, Level 2.

**1067/042\*** Eight input bus control unit, up to 32, with 2,8 A power unit IMQA Level 2.

**1067/021\*** Control keypad with backlight display. IMQA Level 2.

**1067/334\*** High security key set. IMQA Level 2.

The kit consists of: 3 electronic keys - 1 arming device with Simon Urmet NEA series adapter.

**1067/335\*** Supplementary arming device IMQA Level 2.

This module is used to arm/disarm the system using an electronic key. Included: 1 Simon Urmet NEa series adapter.

**1067/434\*** High security transponder kit IMQA Level 2.

The kit consists of: 3 proximity keys - 1 proximity reader with Simon Urmet Nea series adapter.

**1067/435\*** Supplementary proximity reader. IMQA Level 2.

This module is used to arm/disarm the system using a transponder key. Included: 1 Simon Urmet Nea series adapter.

# 1063 System



In offices and small industries, the demand for security with cosmetically appealing solutions is also high. This is why Simon Urmet and Urmet have integrated a top performance anti-intrusion system in Flexa and Kâdra units: 184 alarm detector inputs, 143 actuator outputs, up to 31 connectable devices on one or two separate backbones, dialogue with control rooms. The system is provided with anti-tampering functions on control unit and connected devices.



1063/022



1063/031



1063/334A



1063/335A

**1063/022\*** Multifunctional bus control IMQA. Level 2.

**1063/031\*** Control keypad with backlight display. IMQA Level 2.

**1063/334A\*** High security key set. IMQA Level 2.

The kit consists of: 3 electronic keys - 1 arming device with Simon Urmet NEA series adapter.

**1063/335A\*** Supplementary arming device IMQA Level 2.

This module is used to arm/disarm the system using an electronic key. Included: 1 Simon Urmet NEa series adapter.

**1063/336A\*** 4 inputs splitter. IMQA Level 2.

This module is used to split 4 independent zones. Included: 1 Simon Urmet Nea series adapter.

# System complements



Anti-intrusion systems have many detectors installed in rooms: being able to count on reliable products with design integrated with a wiring system means being able to install these components with greater freedom.

The Urmet offering is completed by other accessories in the anti-intrusion system range, for security suitable to all environments.

Technology evolves, hand in hand with design.



1033/115



1033/111



1033/110



1033/168



1033/169



1033/415

1033/115\* Dual technology detector. IMQA Level 1

1033/111\* Passive infraed sensor with joint. IMQA Level 1

1033/110\* Passive IR detector eit pet immunity function. IMQA Level 1. Suitable for ensuring reliable protection in presence of small pets.

1033/168\* Internal infread sensor for special installations. Anthracite colour.

1033/169\* Internal infread sensor for special installations. White colour.

1033/415\* External-self powered siren, PRIMA, IMQA Level 2

# Hotel automation systems



Design simplifies technology, showing its human, welcoming side.

This is why cutting-edge solutions must be contained in a pleasant, coordinated style in hotels. GLT and Simon Urmet have created a perfect integration: sophisticated hotel systems, suitable even for the most luxurious settings, are fitted in Flexa and Kàdra. A wide range of finishes and colours allow maximum freedom to interpret all interior decoration style for top performance, evolved automation functions.

From the GLT experience, a complete range of solutions to respond to all needs of comfort and security of the most modern hotels.

From room monitors to thermostats, perfume diffusers and other solutions, a series of customised accessories, all installable on Nea Flexa and Kàdra units for coordinating style throughout.





1048/774SU



1048/714SU



1048/715SU



1048/716SU



1048/717SU



1048/718SU



1048/719SU



1014/301

1048/774SU Room Bus thermostat with graphic display for Simon Urmet

1048/714SU Outside room TAG transponder Room Bus for Simon Urmet

1048/715SU Inside room TAG transponder Room Bus for Simon Urmet

1048/716SU Outside room universal Room Bus reader for Simon Urmet with 2 inputs and 2 outputs

1048/717SU Inside room universal Room Bus reader for Simon Urmet

1048/718SU Outside room Myfare universal Room Bus reader for Simon Urmet with 2 inputs and 2 outputs

1048/719SU Inside room Myfare universal Room Bus reader for Simon Urmet with 2 inputs and 2 outputs

1014/301 Indoor BLOW perfume diffuser

# NOTES

A series of 20 horizontal dotted lines for writing notes.



**Simon Urmet S.p.A.**  
reserves the right to modify the characteristics of the products illustrated without prior notice.  
This publication shall not be construed as a contractual document.

*Realisation:* Land - art Patrizia Beda

*Print:* Stamperia Artistica Nazionale

*Printed:* gennaio 2011

**simon**  
**urmet**

DEVICES AND  
SYSTEM FOR  
WIRING INSTALLATIONS

SIMON URMET S.p.A.  
Via Bologna 152  
10154 Torino

tel +39 011 24 00 000  
fax +39 011 24 00 249  
[www.simonurmet.com](http://www.simonurmet.com)  
[info@simonurmet.com](mailto:info@simonurmet.com)

CTGE001